



The Blade, Manchester

£1,950 PCM

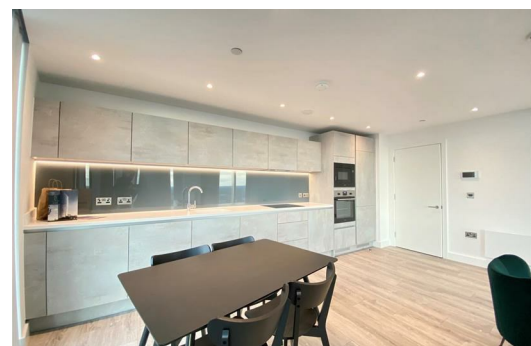
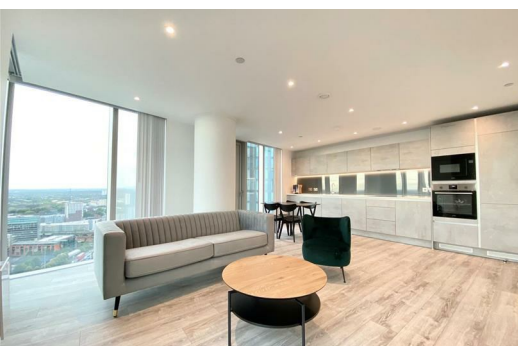
27th Floor - Corner Aspect

Introducing The Blade, one of Manchester's most exciting apartment schemes. This impressive 52-storey building offers residents unmatched panoramic views of the city's captivating skyline. And with over 400 luxurious apartments and fantastic communal spaces, The Blade guarantees an exceptional living experience.

Nestled in the heart of Castlefield, Manchester's vibrant skyscraper district, The Blade seamlessly blends urban living with a tranquil and serene environment. And if you ever feel like escaping the hustle and bustle of the city, you'll appreciate the convenience of having Deansgate Train Station & Metrolink right on your doorstep.

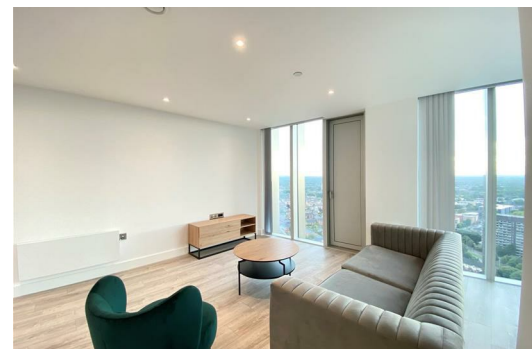
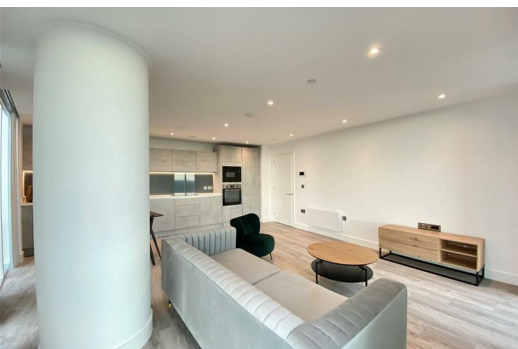
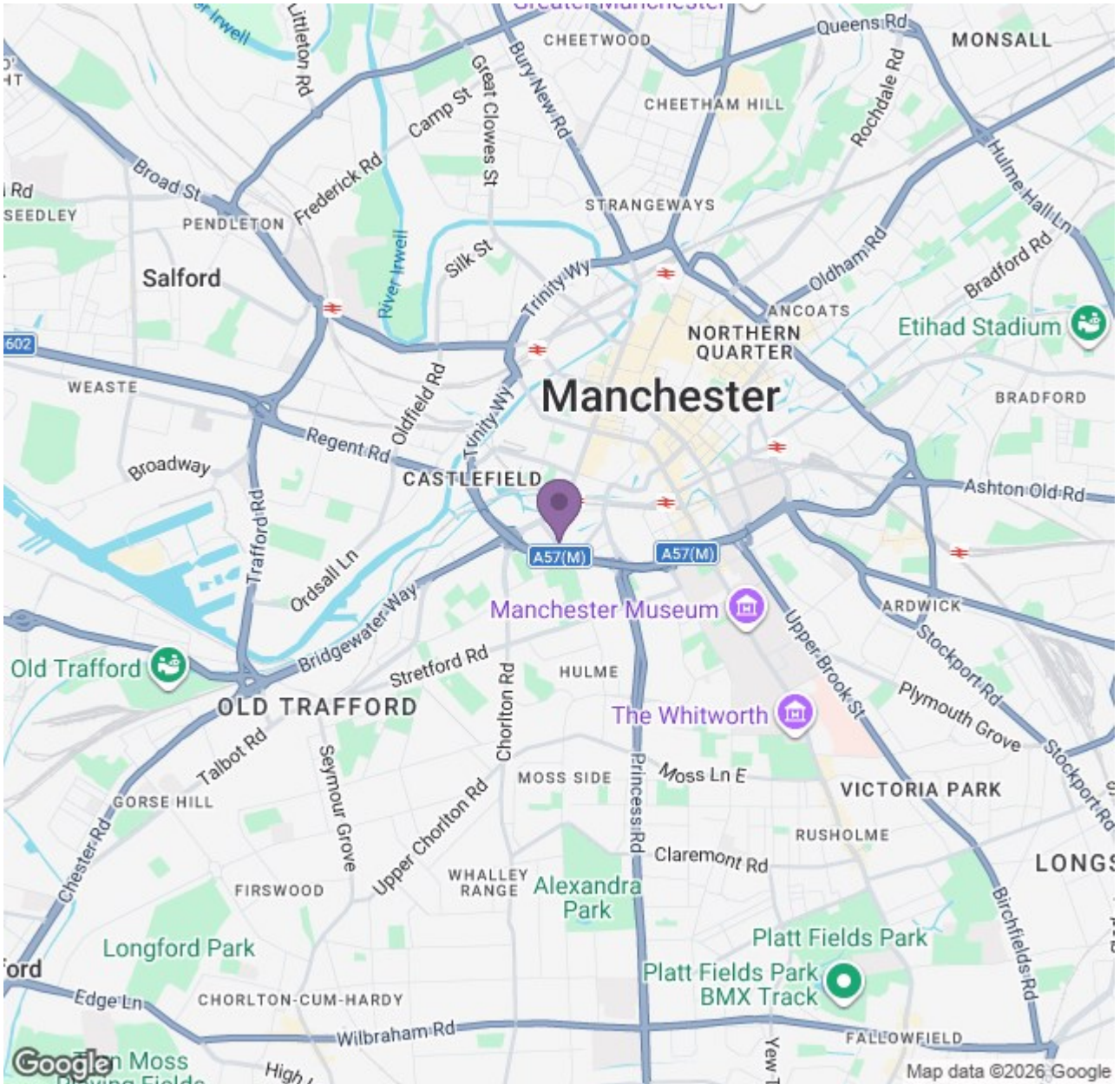
Step into your fully furnished home and be instantly captivated by the exquisite contemporary interior design. The kitchen, designed for culinary enthusiasts or those wanting to entertain on a Friday night, features top-of-the-line built-in appliances, modern mixer taps, and elegant under cabinet lighting.

Beyond the kitchen, you'll find an open and airy living area, creating a spacious and inviting atmosphere.



Ascend

Built on higher standards



Energy Efficiency Rating		Environmental Impact (CO ₂) Rating	
Current	Target	Current	Target
85	85	B	B
85	85	B	B
85	85	B	B
85	85	B	B
85	85	B	B
85	85	B	B
85	85	B	B
85	85	B	B
85	85	B	B
85	85	B	B

Ascend

Built on higher standards